

**2021-2022 US Education Academic Year**  
**Updates and New Standards**

**Introduction**

The school picture industry offers a variety of products and services to students and schools. These are often used in conjunction with yearbooks and other products. A system that facilitates the easy combination of the products and services of different suppliers has a number of benefits.

Currently, individual students and schools employ photographers to take photos. Each of these image takers involves a photo lab or digital imaging firm to convert the captured image into another format, such as prints, various digital formats, cards, etc. In the case of yearbooks, the publisher takes the images and converts them to a printed page, employing yet another method for image creation.

When the students and schools use more than one photographer, and the photographers and the different labs generate distribution data sets in their own formats, it is more difficult, time consuming and costly to coordinate the data, images and publishing of yearbooks. By using a standard format, a greater number of vendor choices would exist for the school and increase the level of satisfaction.

Similarly, photographers' policies regarding allowable use of their images may vary, as do methods for communicating licensing terms from the school or student's photographer to the school and then on to the yearbook company. In some cases, licensing terms and copyright information embedded in image file metadata may be unintentionally stripped upon transfer from one image management platform to another. A common guideline that establishes default copyright and usage rules that apply in the absence of an agreement between the photographer and the yearbook company will provide greater certainty to all affected parties and avoid the need for schools to be the gatekeeper for copyright issues.

Moreover, regulatory requirements for the handling and usage of student data and images have evolved and continue to change. It is ever more important for school service providers to be transparent about their use of student information and to make public their commitment to responsible data practices. While allowable usage of student images may vary depending on applicable laws and regulations, school board policy, the photographer's licensing terms and the photo subject's authorization, the photo subject's privacy interest is best served by a common image usage guideline that serves as an industry default.

It must be noted that technology continues to change. Any guideline promoting a coordinated system needs flexibility for the future. The ultimate goal is to satisfy the customer - the school. It is believed that satisfaction can be increased by creating common readable files for the transmission of digital images and associated data from the school photographer to the yearbook publisher in a format that is as efficient and consistent as possible, as well as common image usage parameters that may be deviated from but only with all appropriate authorizations and in accordance with applicable laws, regulations and school board policies.

54  
55  
56  
57  
58  
59  
60  
61  
62  
63  
64  
65  
66  
67  
68  
69  
70  
71  
72  
73  
74  
75  
76  
77  
78  
79  
80  
81  
82  
83  
84  
85  
86  
87  
88  
89  
90  
91  
92  
93  
94  
95  
96  
97  
98  
99  
100  
101  
102  
103  
104

## **Audience & Scope**

The following document is intended to inform the Underclass (K-11) School Photographer, Contract Senior Photographer, Photography Production Laboratory, interested Software Developers, and Yearbook Companies as to the generally accepted data and *subject* image guidelines for the exchange of data and *subject* images between photography organizations and yearbook producers. This document is NOT directly intended for the common school customer.

The scope of this document includes, and is limited to the Professional School and Sports Photographers committee developed technical guidelines for data and image exchange between the interested parties listed above. This document is technical in nature and does NOT intend to outline or require market implementation by any particular organization. This document is NOT intended to provide direct explanatory material to the target consumer of the final product resulting from adoption of these guidelines (the school).

## **Benefits**

Benefits from such a system could include the following:

- By specifying a guideline to which the product should conform, the school has the means to measure the value of what they are acquiring, and can make comparisons between suppliers. This can lead to opportunities that are more competitive for schools, permitting them to pick, choose, mix, and match among the numerous suppliers. While the format for the product is not the only element for price comparison, use of a common format makes the comparison simpler.
- Creating an easier interchangeability of images and data files between image providers and users. This can reduce the time it takes to create products, and could lead to reduced costs and improved quality and the number of product choices.
- Communication between schools, image providers and yearbook producers can be clarified and improved by reference to a common guideline.
- An assurance of a minimum level of quality and performance for the digital products.
- An easing of the decision making process for schools by the use of common terminology and comparable products.
- Removal of the school from the middleman position between photographers, photo labs and yearbook companies over the format of the distributed data set and the assurance of compatibility, copyright and/or image usage issues.
- Establishing default terms that apply to image usage in the absence of an agreement between the school's photographer and yearbook company.

105 **Communication**

106 A useful guideline will require communication and education programs directed to  
107 both the schools and the photo industry. It will be necessary to provide materials  
108 to explain the system and its benefits.  
109

110 **Limitations of the Guidelines**

111 These guidelines address the *format* for the distribution data sets. The  
112 guidelines do not address many areas for technical or legal reasons. Among  
113 them are the photo capture and editing process, the photo print output, and  
114 the yearbook printing quality and features. These areas are the subject of  
115 creative and artistic differences, as well as customer choice. In addition, these  
116 guidelines do not suggest or require which of the interested persons or  
117 organizations has responsibility for collecting, recording, distributing or  
118 protecting the data. That is a matter for those interested to arrange among  
119 themselves.  
120

121 These guidelines do not prescribe specific data security practices, procedures  
122 or standards, since legal requirements and technical options are evolving  
123 rapidly in this area, school requirements vary, and data security industry  
124 associations are better equipped to set standards in this area. All parties  
125 charged with creating, storing, handling and distributing files containing  
126 personally identifiable student information – photographers, yearbook  
127 publishers, labs and other subcontractors – must determine and implement  
128 those physical, administrative and technical measures necessary to protect  
129 such information in accordance with applicable law, school requirements and  
130 current data security best practices.

131

132 **Digital Data & Image Format**

133 These Guidelines are intended to define the format and content of Yearbook  
134 Image Distribution Data Sets – a collection of images and associated data  
135 provided by a photographer for the intended purpose of creating yearbook  
136 content. The form of the distribution may be physical media (such as a CD,  
137 DVD, USB Drive, etc) or through electronic transfer (such as a file sharing  
138 service, direct URL access, FTP, etc). Regardless of the method of  
139 distribution, the same format and structure outlined in these Guidelines will  
140 apply.  
141

142 The Digital Data & Image Format Guidelines strongly recommend the following:  
143  
144

## Data Set Layout & Structure

Regardless of transmission service or media type, all file structures and layout, in the document to follow, remain the same. The exception being the "volume name" which will be either the media name (if the media is capable of only containing a single data set), or it will be the top level folder under which all files and structures will be contained. The top level folder should follow the naming structures for "volume name" as documented in this document.

Data layout:

```
Volume Name for media or top level folder name
INDEX.TXT
MASTER.TXT [optional]
README.TXT [strongly recommended]
FOLDERx [use an arbitrary name but must be unique]
    IMAGEx [use unique names for each image]
    IMAGEx+1
    *
    *
    *
FOLDERY IMAGEy
    IMGAEy+1
    .*
    .*
    .*
etc.
```

**Volume Name** – Volume name for media or top level folder name is an arbitrary name, but the name string must be ended with a numeric value to account for multiple media volumes. Multiple media volumes should have *consecutive* numbers.

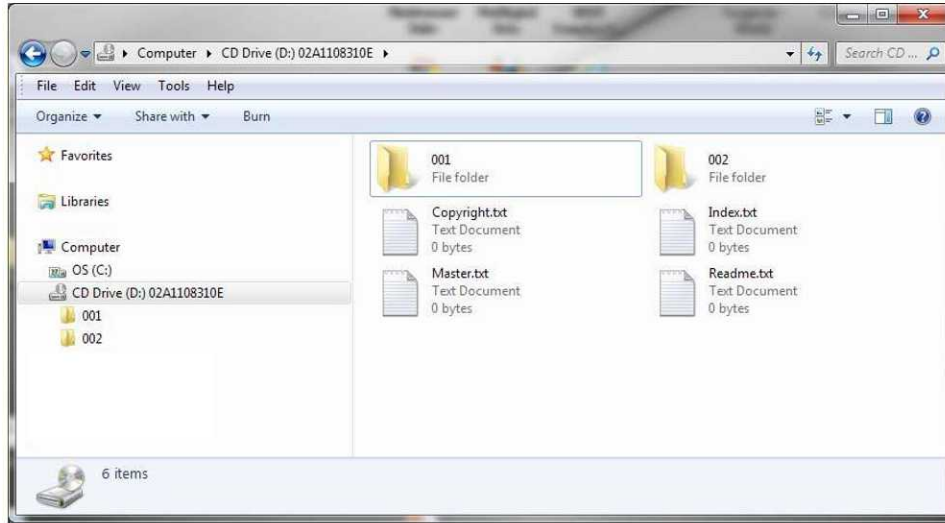
**.TXT Files** – Text files (.TXT) are standard **UTF-8 or** ASCII sequential text files and must be located directly at the root level of the data set or media.

**Folder Names** – Folders contain uniquely named image files. The folder name(s) **MUST** be unique for each folder and can consist of UPPER and/or lower case alphanumeric characters and numeric values 0-9 **ONLY**. Special characters of "\_" (underscore) and "-" (dash) are allowed.

**Image Names** – Image file names **MUST** be unique for each image and can consist of UPPER and/or lower case alphanumeric characters and numeric values 0-9 **ONLY**. Special characters of "\_" (underscore) and "-" (dash) are allowed. Image file names must contain the ".jpg" file type suffix (see Image Guideline Section for details for image files).

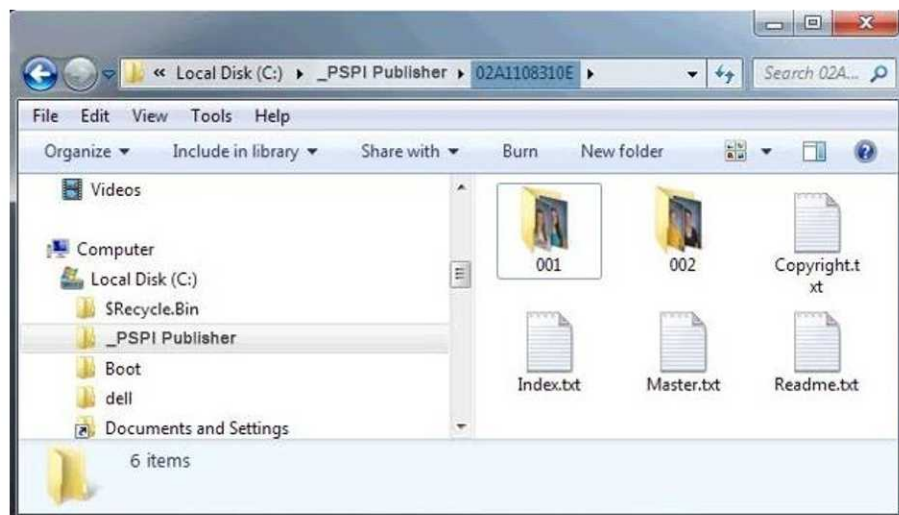
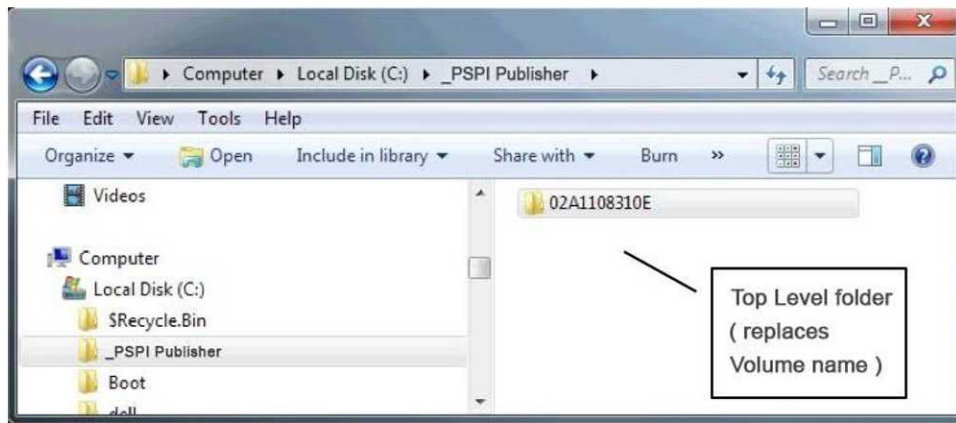
**Screen Shot Example of Data Layout for CD/DVD:**

191  
192  
193  
194  
195  
196  
197  
198  
199  
200  
201  
202  
203  
204  
205  
206  
207  
208  
209  
210  
211  
212  
213



**Screen Shot Example of Data Layout for electronic transmission:**

214  
215  
216  
217  
218  
219  
220  
221  
222  
223  
224  
225  
226  
227  
228  
229  
230  
231



232

233

## 234 **Data Structure**

235 The following section defines the required and recommended text (.TXT)  
236 files and their structures:

- 237  A standard text file is to be contained *directly under the root* of the media  
238 or directly under the top level folder if transmitting electronically.
- 239  All volume, directory and file names **MUST** be unique and can consist of  
240 UPPER and/or lower case alphanumeric characters and numeric values 0-9  
241 ONLY. Special characters of "\_" (underscore) and "-" (dash) are allowed. .
- 242  Text files are standard **UTF-8** or ASCII format. **Our default format prior to**  
243 **2021 was ASCII with allowances for UTF-8 if verified with the**  
244 **receiver. In 2021, our recommended default format changed to UTF-**  
245 **8 with allowances for ASCII during the transition. Text format is to**  
246 **be specified in the README.TXT.**
- 247  The fields, contained within the text files, are to be **Tab delimited** (fields  
248 separated by a tab character). **Note:** Care should be taken to limit the  
249 length of the data in the included field sets. Excessively long data strings  
250 can pose issues in downstream applications.
- 251  Line termination must be indicated by **CR-LF** (carriage return, line feed).
- 252  The **required** file **INDEX.TXT**
- 253  The optional, but strongly recommended, file **README.TXT**
- 254  The optional file MASTER.TXT
- 255  The distribution data set *may* contain other files and folders that the  
256 producer thinks may be helpful to the school or yearbook producer as long as  
257 they do not interfere with the structures and requirements of these  
258 guidelines. These files are not explained, required or covered by this  
259 document and are a superset to these guidelines.

260

## 261 **Data Content and Attributes**

262 The following sections define the content and attributes of the required and  
263 recommended data files to be contained in the data set.

264

### 265 **COPYRIGHT.TXT**

266 **The COPYRIGHT.TXT file is an OPTIONAL but STRONGLY**  
267 **RECOMMENDED file.** Its purpose is to contain copyright and license  
268 information important to the content of the data set. The absence of a  
269 copyright.txt file, however, shall not be deemed a waiver or release of the  
270 photographer's copyright interest in the content of the data set.

271

272

273 The generally accepted language of the COPYRIGHT.TXT file, and the license  
274 that shall be deemed to apply to yearbook companies in the event that the  
275 copyright.txt file is left blank is as follows:

276  
277 **The images provided in this distribution are copyright**  
278 **protected and are solely for the use of creating a yearbook**  
279 **subject to the terms and conditions of license provided by the**  
280 **school photographer to the school ("License Agreement").**  
281 **Unless otherwise stated in the License Agreement or with the**  
282 **school photographer's and the photo subject's (or a minor**  
283 **subject's parent's) prior written consent, reproduction is limited**  
284 **to the traditional class portrait pages of the school yearbook.**  
285 **You do not have permission to make copies for sale, or to**  
286 **otherwise disclose, publish or make commercial use of the**  
287 **images in any manner.**

288  
289 The information of the COPYRIGHT.TXT file is the same as in the [License]= tag  
290 of the README.TXT file to follow. Its importance to the user of the data  
291 requires it be directly under the root of the data set. It is also strongly  
292 recommended that the statement be in printed form on the packaging and on  
293 the label when physical media is used.

294  
295 The statement suggestion above may be modified to the copyright holders'  
296 requirements. This wording claims ownership of the material (image(s)  
297 specifically) but leaves each copyright holder free to determine its own  
298 licensing policy.

299  
300 It is recommended that wording in the school contract (between  
301 photographer and school) specifically address usage scope and copyright  
302 definition. It is beyond the scope of structure and content guideline  
303 definition to enforce copyright protection.

## 304 305 **INDEX.TXT**

306 **The INDEX.TXT file is a REQUIRED file.** Its purpose is to contain all the data  
307 records to be included in the published yearbook product. Part of each data record  
308 contained in the INDEX.TXT file is a reference to the associated subject image. It  
309 is this file that the yearbook producer will use to incorporate data and associated  
310 images into the yearbook product.

311  
312 **Only the final records and associated images chosen to appear in the**  
313 **yearbook publication should be included in the INDEX.TXT file.** This file  
314 should include references to images contained in all data sets if there is more than  
315 one. If other images are also in the data set, they should be **separately**  
316 identified in the MASTER.TXT file (not to be referenced in the INDEX.TXT).

## 317 318 **Structure and Field Order**

319 The following section defines the structure and field order for the INDEX.TXT file:

- 320  
321
- 322 1. Volume name for media or top level folder name
  - 323 2. Image Folder
  - 324 3. Image File Name
  - 325 4. Grade\*
  5. Last Name

- 326 6. First Name
- 327 7. Home room
- 328 8. Period
- 329 9. Teacher Name
- 330 10. Track
- 331 11. Department
- 332 12. Title
- 333 13. Image Size
- 334 14. Suffix (RN, Phd)
- 335 15. [Any additional defined fields].
- 336
- 337

338 Note: The above 14 defined, default, and reserved fields should be maintained. If  
339 the data set producer chooses to omit any of the information, then that should be  
340 identified with a NULL VALUE (two tabs together). Any additional fields, beyond  
341 the 14 default fields, should trail field number 14 and be identified in the  
342 README.TXT by the labels in the first record.

343  
344 **\*Note on Grade Field:** If it is determined that school staff are to be identified  
345 separately from students, use the "Grade" field to indicate staff definitions. If  
346 used, at a minimum "STA" should be used to identify staff members. More  
347 detailed definitions of staff should be included in the README.TXT file to identify  
348 staff code usage.

- 349  The suggested, and optional, identifying file for *other* images is MASTER.TXT.  
350 This file would contain a listing of all of the images in the data combining  
351 those that are in the INDEX.TXT file as well as all others.
- 352  It is highly recommended that the data contained in the INDEX.TXT and  
353 MASTER.TXT files be in final UPPER/lower (Title) case format.

### 354 355 **INDEX.txt File Keyword Definitions**

- 356  **Volume Name** - Volume name for media or top level folder name is an  
357 arbitrary name, but the name string must be ended with a numeric value to  
358 account for multiple data sets or media volumes. Multiple media volumes  
359 should have *consecutive* numbers.
- 360  **Image Folder** - The folder holding the images is located directly under the  
361 root volume. The folder name(s) must be unique using ANY naming  
362 convention File names must consist of UPPER or lower case alphanumeric  
363 characters and numeric values 0-9 ONLY.
- 364  **Image File Name** - The file name for an image, with extension. Example:  
365 "00001.jpg" Image file names MUST be unique for each image. File names  
366 must consist of UPPER and/or lower case alphanumeric characters and  
367 numeric values 0-9 ONLY.
- 368  **Grade** - The grade data assigned to the individual, if applicable. Example: "4"
- 369  **Last Name** - The individual's last name. Example: "Smith"
- 370  **First Name** - The individual's first name. Example: "John"
- 371  **Home Room** - An identifier for the individual's home room. Example: "AA"
- 372  **Period** - An identifier for the individual's period. Example: "6"
- 373  **Teacher Name** - The name or identifier for the individual's teacher.  
374 Example: "Jones".
- 375  **Track** - The name or identifier for the individual's track (usually used in  
376 year around schools). Example: "Special Needs" or "A".
- 377



- 378  **Department** – Indicates which role the individual plays at the school.  
379 Recommended values are "Faculty", "Administration", "Support Staff",  
380 "Student" and "Teacher".
- 381  **Title** – Indicates courtesy title such as Mr. Mrs. And Dr.
- 382  **Image Size** – Indicates image size such as Small Large or Other  
383

## 384 **README.TXT**

385 **The README.TXT file an OPTIONAL but STRONGLY RECOMMENDED file.**

386 The README.TXT is used to describe the content, order, special instructions, data  
387 and image source, etc. of the data set(s). It should identify *key words*, the  
388 definition of each field included, and the number of additional data fields used in  
389 the INDEX.TXT file, if any. If the README.TXT file is included in the data set, the  
390 structure and content should be as follows:

- 391  Each keyword should be contained with bracket ([ ]) characters
- 392  The bracketed keyword and the keyword value should be separated by an  
393 equal (=) sign
- 394  Each keyword and value should appear as one line terminated by a  
395 carriage return and line feed (CR/LF)
- 396  The structure, order and keywords should be as follows:
  - 397 [Image Size] =
  - 398 [Color Mode] =
  - 399 [School Name]=
  - 400 [# Fields] =
  - 401 [Field Definition #1] =
  - 402 [Field Definition #2] =
  - 403 etc.until the last field used is defined
  - 404 [Group Fields] =
  - 405 [Group By] =
  - 406 [Sort By] =
  - 407 [Producer URL] =
  - 408 [Lab Name] =
  - 409 [Lab Location] =
  - 410 [Lab Contact Name] =
  - 411 [Lab Contact email] =
  - 412 [Lab Contact Phone] =
  - 413 [Photo Job Number] =
  - 414 [Date Created] =
  - 415 [PSPI Version]=
  - 416 [LICENSE]= **Copyright specific to this data set. See suggested language**  
417 **under the COPYRIGHT.TXT section of this document.]**
  - 418 [Comments] =
  - 419 [ICC] =
  - 420 [Grade]=

## 422 **Readme.txt File Keyword Definitions**

- 423  **Image Size** – Keywords used to identify the size of the images  
424 contained in the data set. Allowable keywords are: **Small, Large,**  
425 **Other**
- 426  **Color Mode – RGB**
- 427  **School Name** – Keyword to indicate the information to follow will be  
428 the name of the school contained in the data set. The name of the  
429 school is simple a text string identifying the school by name.

## SPOA Digital Guidelines & Standards

For the Usage and Production of Yearbooks  
for all US Schools



- 430  
431  
432  
433  
434  
435  
436  
437  
438  
439  
440  
441  
442  
443  
444  
445  
446  
447  
448  
449  
450  
451  
452  
453  
454  
455  
456  
457  
458  
459  
460  
461  
462  
463  
464  
465  
466  
467  
468  
469  
470  
471  
472  
473  
474  
475  
476  
477
- # Fields** – The number of fields keywords identifies how many fields will be identified in the Index.TXT and Master.TXT files. The minimum value allowed is **13** with no maximum.
  - Field Definition #1 - ?** – The keywords for field definitions will repeat themselves, one for each included field. The content of the keyword will be the definition of the field at that position. Example for the first 2 fields:  
[Field Definition 1] = Volume Name  
[Field Definition 2] = Image Folder
  - Group Fields** – Keyword to indicate the allowable field set from which data grouping is allowed.
  - Group By** – Keyword to indicate the field(s), from the Group Fields allowable field set, that have been selected to group data for the publication.
  - Sort By** – Keyword to indicate the sorted order of data within the selected Group By selection.
  - Producer URL** – Keyword to indicate the URL address of the producer of the data set. Used for contact information of the producer.
  - Lab Name** – Keyword to indicate the information to follow is the *name* of the data set producing Lab or entity.
  - Lab Location** – Keyword to indicate the information to follow is the *location* of the data set producing Lab or entity.
  - Lab Contact Name** – Keyword to indicate the information to follow is the *name of a contact person* at the data set producing Lab or entity.
  - Lab Contact E-mail** – Keyword to indicate the information to follow is the *e- mail address* of the contact person at the data set producing Lab or entity.
  - Lab Contact Phone** – Keyword to indicate the information to follow is the *phone number* of the data set producing Lab or entity.
  - Photo Job Number** – Keyword to indicate the information to follow is the *reference job number used* at the data set producing Lab or entity.
  - Date Created** – The date the data set was created.
  - PSPI Version** – The guideline version (from the document title).
  - License** – Usage and license statement for images and data
  - Comments** – Additional comments intended for communication about the data set or content.
  - ICC** – ICC profile tag to indicate color profile used. Default is blank and will assume sRGB.
  - Grade** – List staff code definitions if staff identification used *beyond* the defined "STA" code to indicate staff members. As an example: TCH (teacher), CUS (Custodian), PRI (Principal), VPR (Vice-Principal), SEC (Secretary), AID (Aide). The code and definition should be paired as seen in the examples above. These codes are not required nor define what they should be. They are only examples to indicate structure for CODE and (definition) comma separated in one line following the keyword.

- Format** – Either UTF-8 or ASCII

### **MASTER.TXT**

**The MASTER.TXT file is an OPTIONAL file.** Its purpose is to contain all the data records associated with the school photography activity. Like the INDEX.TXT file, part of each data record contained in the MASTER.TXT file is a reference to the associated subject image.

Some photographers, schools or other customers may desire to include *multiple poses* or “proof plan” photos in the data set, even though they are *not* intended for yearbook reproduction. There is no suggestion in these guidelines that anyone should or should not provide extra images. However, if such images are provided but are not intended for inclusion in the product covered by the INDEX.TXT file, they should *not be listed within the INDEX.TXT file*. **Only the pose or image selected for inclusion in the yearbook should be identified in the file named INDEX.TXT.**

The structure and order of the MASTER.TXT file is IDENTICAL to that defined above for an INDEX.TXT file.

### **Post Data Set Production Modifications of Data**

Some data set producers may choose to develop image and data editing applications to allow school customers to review and edit data and associated images. If such applications are used, then text files will obviously be modified from their original data set versions. When changes are made to INDEX.TXT, MASTER.TXT and/or README.TXT files, it is preferable to incorporate those changes into a new data set or transmittable .ZIP file. However, in the absence of a new data set or transmittable .ZIP file, **replacement files** should be completely rewritten on a writeable media (or media acceptable to the parties) and provided with the data set or transmittable .ZIP file to the yearbook producer.

### **Image Structure and Attributes**

The following section defines the image files and their attributes:

- All image file names should be unique.
- Image file names **MUST** be unique for each image and can consist of UPPER and/or lower case alphanumeric characters and numeric values 0-9 ONLY. Special characters of “\_” (underscore) and “-”(dash) only.

#### **Image attributes:**

##### **Image file format**

- Color images
  - The default guideline for all images (underclass and senior) is RGB color. RGB color images are preferred even if the book is produced in B&W. Publisher assumes the responsibility for conversion.
  - The default, and assumed, ICC color space is **sRGB**. Any color space used other than the default must be indicated in the ReadMe.txt file in the “[ICC]=” tag. It is **important** that the ICC profile be identified in this tag if it is NOT sRGB.

- 528  All RGB color image files are to be saved in **JPEG format**. Image file
- 529 names must include “.jpg” file type suffix (ex. 123456.jpg)
- 530  JPEG compression ratio of **7.5:1** or less. An option is to include a
- 531 qualitative reference image, such as a Macbeth™ chart, gray card, or
- 532 other tools that provide a reference standard, which will assist in
- 533 verifying the color space and color balance applied.
- 534  If the photographer desires to explain what has been done on the images
- 535 (if anything), it can be explained in the README.TXT file. Any
- 536 compression ratios, ICC Profiles and reference standards should be
- 537 identified.

### Image sizes

**Note:** While the default size of the images included in the data set on the CD is as referenced below, this size requirement should be checked in the agreement between school and producer to ensure adequate size for intended result.

#### Small (default)\*\*

- 546  320 X 400 pixels (.8 aspect ratio). **This file size is not**
- 547 **recommended for printed images greater than 8 picas by 10**
- 548 **picas (1.334 x 1.667 inches)**. See Printing Industries of America
- 549 (PIA) Guidelines.
- 550
- 551  300 dpi\* in the image file header
- 552  **Small** is the default for most producers unless otherwise specified.

#### Large

- 555  640 X 800 pixels (.8 aspect ratio). **This file size is not recommended**
- 556 **for printed images greater than 12 picas by 16 picas (2 x 3 inches)**.
- 557 See Printing Industries of America (PIA) Guidelines.
- 558
- 559  300 dpi\* in the image file header

#### Other

- 561  Other is defined as any sized .8 aspect ratio image different than SMALL or
- 562 LARGE as defined in this document.

**Note:** If there is a question about individual publisher DPI or format requirement, contact that specific publisher for their specific guideline.

### Deadlines & Equal Opportunity

All US students and school staff deserve the opportunity to be photographed and included in their school's history regardless of race, color, national origin or zip code. Therefore, the following standards have been established to ensure equal opportunity:

- 574 • For all US Schools that start school on or before August 13th, the first
- 575 available yearbook deadline for underclass or senior portraits can be: Dec. 3rd,
- 576 2021

- 577
- 578
- 579
- 580
- 581
- For all US Schools that start school between August the 14th through August 27th, the first available yearbook deadline for underclass or senior portraits can be: Dec. 21st, 2021
  - For all US Schools that start school after August the 27th, the first available yearbook deadline for underclass or senior portraits can be: Jan. 21st, 2022

582

583

584

585

If a yearbook provider requires an earlier deadline, then that yearbook provider should contact the school's contracted photography provider to pay for any expediting fees or available options.

### **Electronic Delivery and Utilization**

586

587

588

589

590

591

592

593

594

Data security standards and student data privacy requirements are variable and evolving. Image providers, schools and Yearbook companies who wish to transmit and deliver student data and images electronically must ensure that such transmission and use is in conformity with applicable state and federal laws and regulations, school board policy, applicable licensing terms and conditions and data security standards commensurate with the sensitivity of the information.

595

596

597

598

599

600

601

602

If a party uses a third party file transfer service provider (for example Dropbox) or other subcontractor to facilitate transmission of student data and/or images, the third party must be approved by the school. It should be clear who is responsible for ensuring that the third party's service contract and privacy policy are consistent with legal and contractual requirements, and who is responsible for that third party's performance in the event that student data is lost, misused or accessed without authorization.

### **School Usage**

603

604

605

606

607

608

609

610

Use of the images contained within the data set(s) is restricted by copyright or license and remains restricted even after the transfer to the school or publisher is complete. Traditionally, the use has been restricted to a one-time use for the printed yearbook panel pages, and unless otherwise specifically allowed by the license, copyright or prior written consent, all other uses are strictly prohibited.

### **Publishers Usage and Publishers Marketing**

611

612

613

614

615

616

617

618

Use of copyrighted images beyond the yearbook panel pages is a violation of the typical school photography industry copyright. To avoid confusion in the marketing message to schools and individual consumers, publishers shall avoid marketing efforts showing the use of copyrighted images for purposes other than panel pages within a yearbook publication.

### **Formation of These Guidelines & Standards**

619

620

621

622

623

624

625

626

These Guidelines and Standards represent an effort, organized by School Photographers of America, of yearbook industry leaders and school photography leaders across the country and Canada to facilitate the production of yearbooks while maintaining the protected copyrights of the photographers that deliver their images in the great tradition of printed yearbooks.

## SPOA Digital Guidelines & Standards

For the Usage and Production of Yearbooks  
for all US Schools



627 While no particular business practice or pricing model is dictated by these Guidelines  
628 and Standards, the almost universal practice has been school photographers not  
629 charging yearbook companies for the use of their protected images, and instead  
630 school photography companies simply require this single standard of data and digital  
631 format in which their images are used and profited from by the yearbook industry.  
632

633 The following companies were present for the ratification of this document:

634  
635 **Bell Photographers**  
636 **Dorian Studio**  
637 **Entourage Yearbooks**  
638 **Freeman Photography Group LLC**  
639 **Friesens**  
640 **GPI/Geskus Photography**  
641 **Inter-Studio & Publishing Co.**  
642 **Jostens**  
643 **Leonard's**  
644 **Lifetouch/Shutterfly**  
645 **Photo Texas Photography**  
646 **Photolynx/ImageQuix**  
647 **SPOA**  
648 **Strawbridge Studios**  
649 **Walsworth Publishing Company**

650  
651 The following companies were not present (due to conferencing difficulties), but  
652 voted by email. Their votes are included in the total counts.

653  
654 **Cady**  
655 **Focused School Photography**  
656 **Visual Image Photography**  
657 **HR Imaging**  
658 **Victor O'Neill Studios**

659  
660 The vote for the ratification of these amendments included in the School  
661 Photographer's of America Yearbook & School Photography 2021 Industry Standards  
662 and Guidelines for the production of all US Yearbooks was done on April 22nd, 2021  
663 at 2:40pm EST and the vote was \_\_20\_\_ (yea) to \_\_0\_\_ (nah).  
664

665 **<END OF GUIDELINES>**